



**ACADEMIC YEAR 2017–2018, SEM - II**  
**REPORT OF GUEST LECTURE & STUDIO INTERACTION**

**Topic:** 2 Day seminar on Hotel design parameters and approach towards design

**Guest Speaker:** Ar. Nimish Porwal (Urban Designer and practicing architect)

**Day and date:** Thursday (21.12.18) & Wednesday (31.01.18)

**Time:** 9.00 am to 12.30 am

**Venue:** Third year section A Studio

**Attendees:** 14 faculty and 69 students

**Seminar Co-ordinators:** Ar. Shilpa Patil and Ar. Gurudeep Chikhalkar

**OBJECTIVES:**

1. Introduction of hotel types and design parameters to be considered for designing a Hotel.
2. To explain zoning, circulation and details required for different activities.
3. Concept development considering culture, heritage and overall site context.

**BRIEF OF THE EVENT:**

Ar. Nimish Porwal is a practicing urban designer in Pune and a visiting faculty at BKPS college of Architecture for last 10 year. He has a wide experience in Hotel designing. In this 2 day seminar he explained what hotel design is. **What are the important parameters of hotel design?** He has been involved in design of many businesses to Luxury and Boutique hotels. He explained the hotel design from concept level to detailing with examples of JW Marriott Pune.

He has reviewed the case study sheets of students where they have displayed Live case study of The O Hotel, Pune and Anandha Inn at Pondicherry. He has given very valuable inputs regarding **functional aspects and experiential quality** of spaces need to be considered during design.

1. Front of the house – zoning & circulation
2. Back of the house – zoning & circulation

**Outcomes:**

1. Views and options of Hotel design were clear to students.
2. Importance of back of the house circulation and functionality was understood very well.
3. Few students from 4<sup>th</sup> year who are planning to take up Hotel design for their thesis were very well helped by the Speaker and future interactions were scheduled.



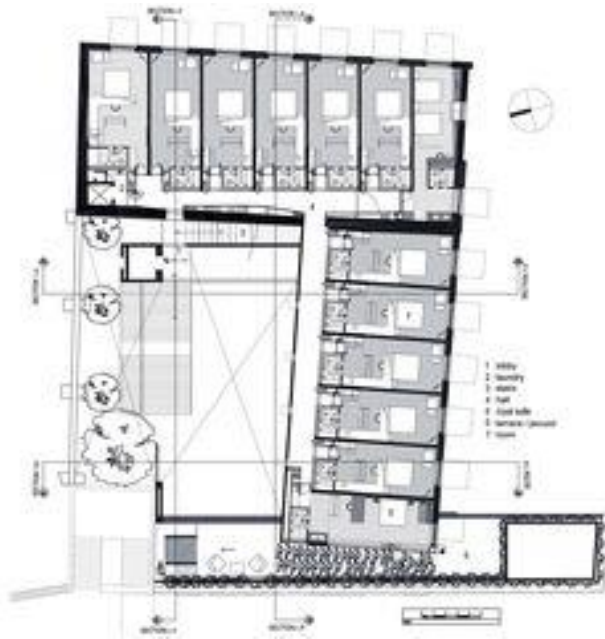
**PHOTOGRAPHS:**



Ar. Nimish Porwal explaining hotel concept



Studio interaction for understanding challenges in hotel design



Service core and rooms layout options



Luxury & Experiential qualities of spaces

Ar. Shilpa Patil

*Program Co-ordinator*

Ar. Gurudeep Chikhalkar

*Program Co-ordinator*

Prof. Ujjwala Palsuley

*Principal*